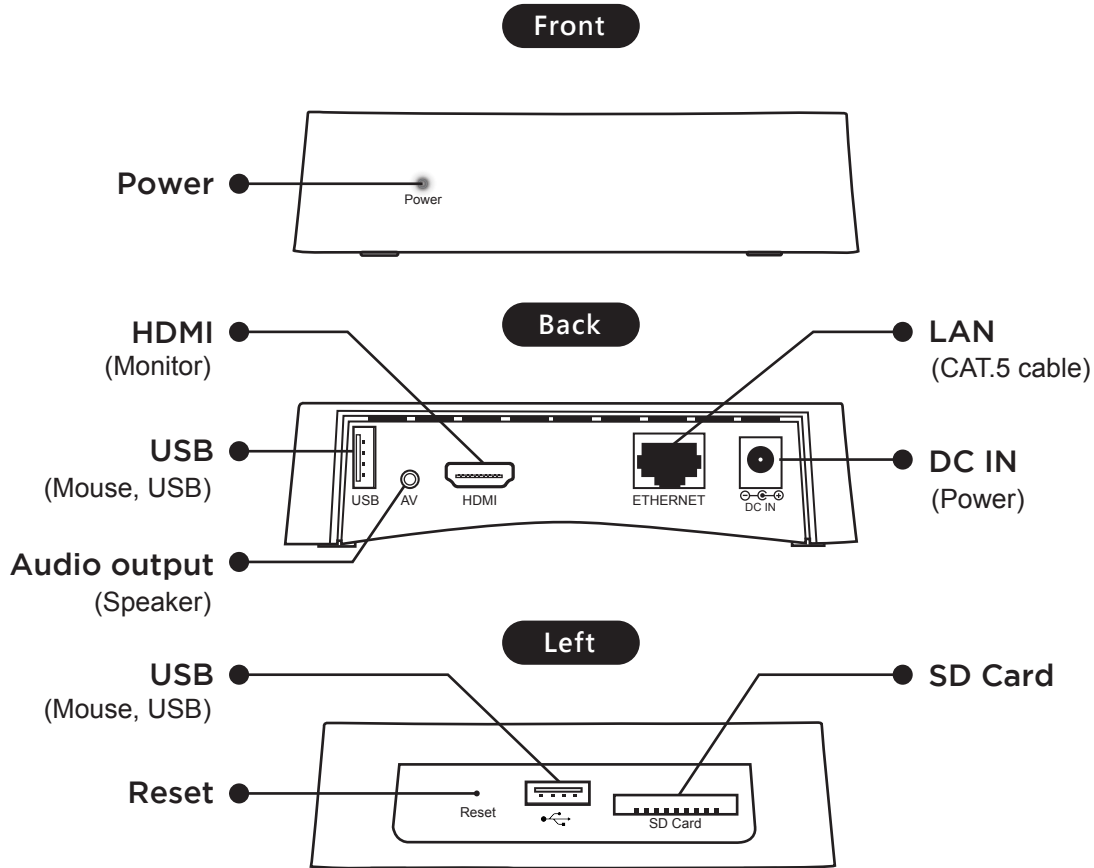




DDS PRO Installation Guide

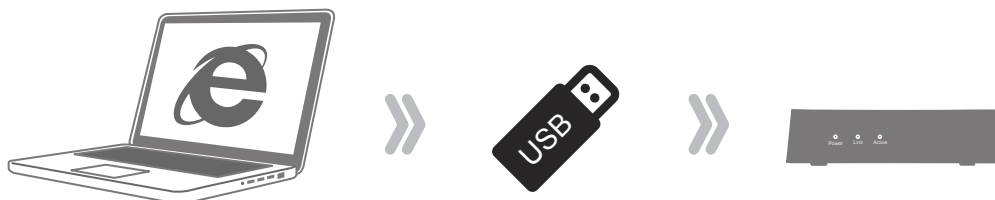
■ Product introduction Before use, please connect power and HDMI



■ Layout settings Website:<http://dds.blueeyes.com.tw>

- 1 Download DDS Editor from the BlueEyes website.
- 2 Install in Windows OS
- 3 Insert USB into computer
- 4 Select layout in DDS Editor
- 5 Choose video, photo, text into layout
- 6 Select playing mode in setting
- 7 Save archive
- 8 Copy to USB

Support Windows 7/8/10



■ Update DDS PRO (via USB)

- 1 Insert USB mouse into DDS PRO
- 2 Insert USB with archive into DDS PRO
- 3 Enter default password "root" to setting
- 4 Select "Content" in settings
- 5 Select "USB" -> DDS PRO will copy and update automatically

Default password
root